

INSTALL GUIDE

NEW CareLink™
Personal uploader

Upload to CareLink
to more easily partner
with your doctor.

IMPROVE YOUR DOCTOR VISITS BY UPLOADING TO CARELINK



NEW simplified steps:

- Four-step process to add
- Two-step upload



Understand your
glucose patterns

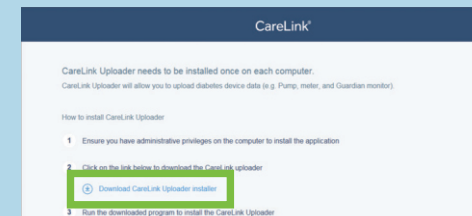


Collaborate with
your doctor

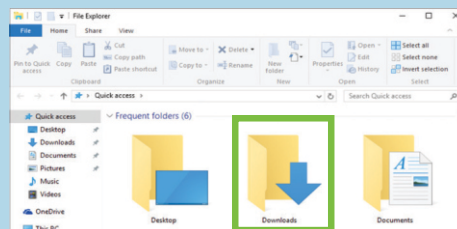
GET STARTED BY DOWNLOADING THE NEW UPLOADER INSTALL FILES



- 1
 - Log In
 - Click "How to Install"



- 2 Click the download link

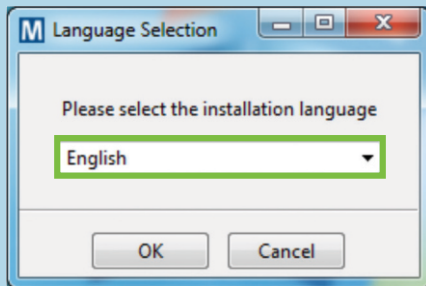


- 3 Find the downloaded file

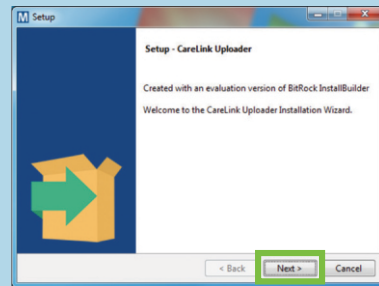


Medtronic

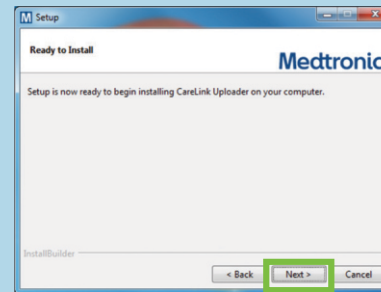
AFTER DOWNLOADING, INSTALL THE UPLOADER



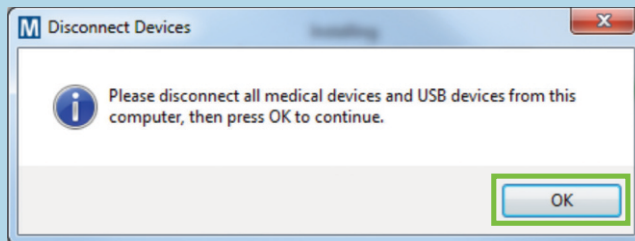
1 Choose your language



2 Click "Next"

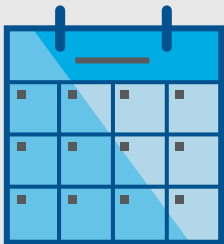


3 Click "Next"

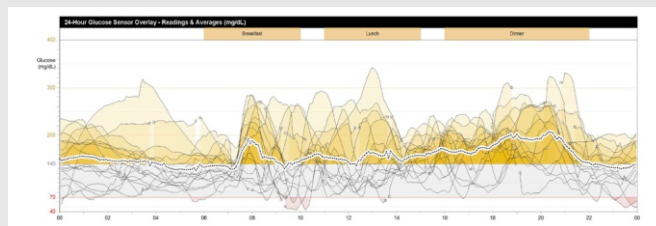


- 4
- Make sure your CareLink USB or meter are not plugged in and click "OK"
 - Click "Finish" to complete the installation

NOW, YOU'RE READY TO UPLOAD

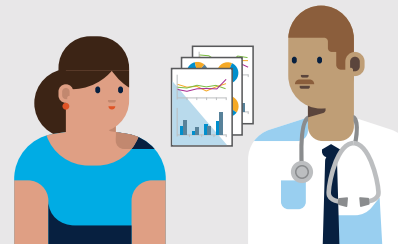


1 Upload regularly



2

- Evaluate improvements
- Review trends



3 Link with your doctor at your next appointment

INSTALL GUIDE

NEW CareLink™ Personal uploader

Safety Information: CareLink™ software

CareLink software is intended for use as an adjunctive tool to help manage diabetes and is NOT intended to be relied upon by itself. For more details, please consult the User Guide at medtronic-diabetes.in/support/guides-and-manuals.

© 2018 Medtronic. All rights reserved. Medtronic, Medtronic logo and Further, Together are trademarks of Medtronic. All other brands are trademarks of a Medtronic company.
950M17620-011 201701001

Medtronic Diabetes
Solitaire Corporate Park,
Bldg.No 12, 1241,
4th Floor, Andheri-Ghatkopar
Link Road,
Andheri (E), Mumbai 400093
+912248810700/701

UC201807714 EN